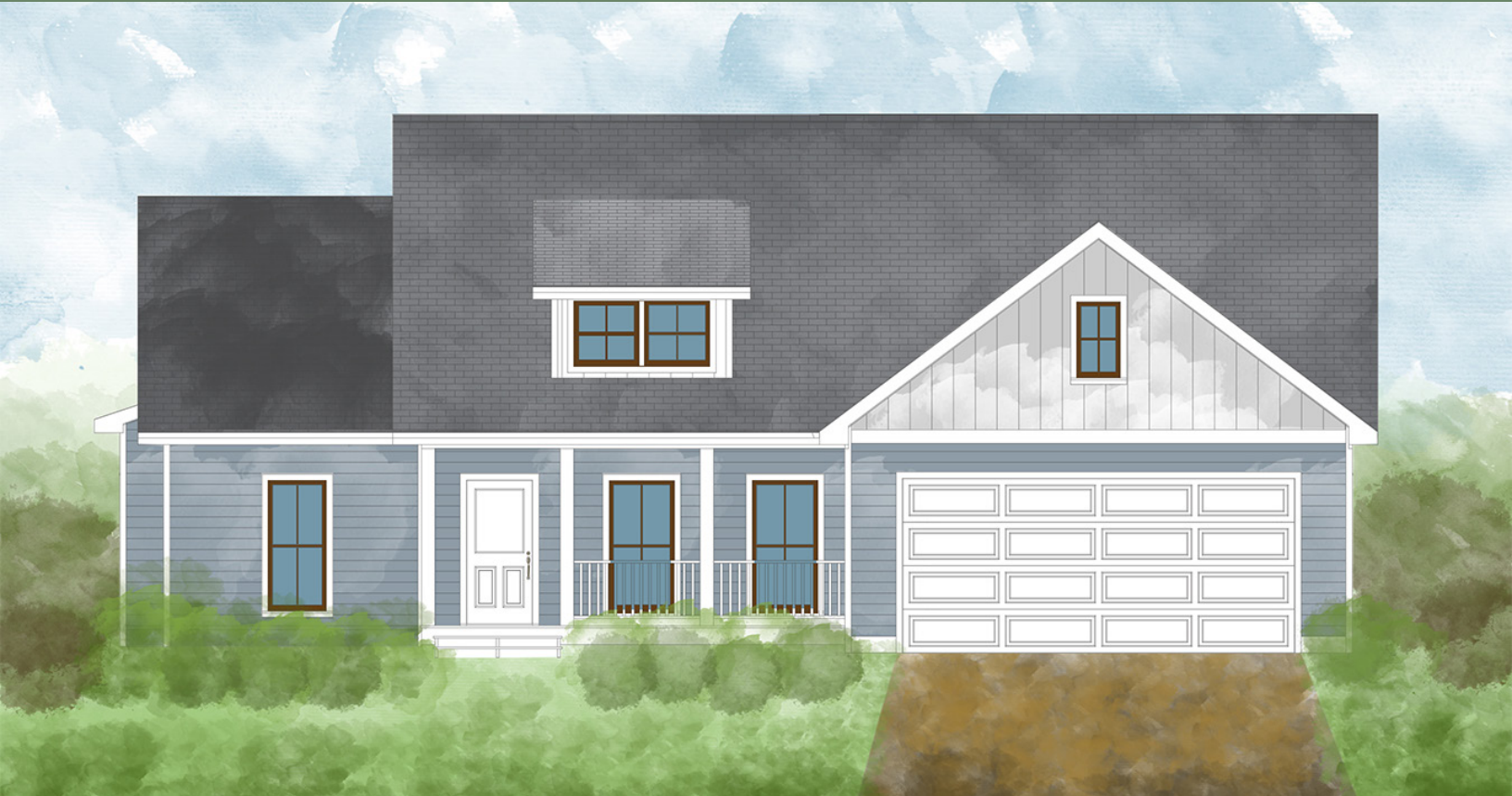




# SPRUCE



Amarx Construction is a full-service general contracting company based in Asheville, North Carolina and servicing all of Western North Carolina.

We know that your home is important to you and we will do our best to fulfill your dreams with exceptional quality and craftsmanship, all while keeping your budget in mind. Amarnx holds an Unlimited North Carolina General Contractors License, so we can take on any size job.

**TOTAL HEATED : 1,617 SQ. FT.**

**ENTRY PORCH: 98 SQ. FT.**

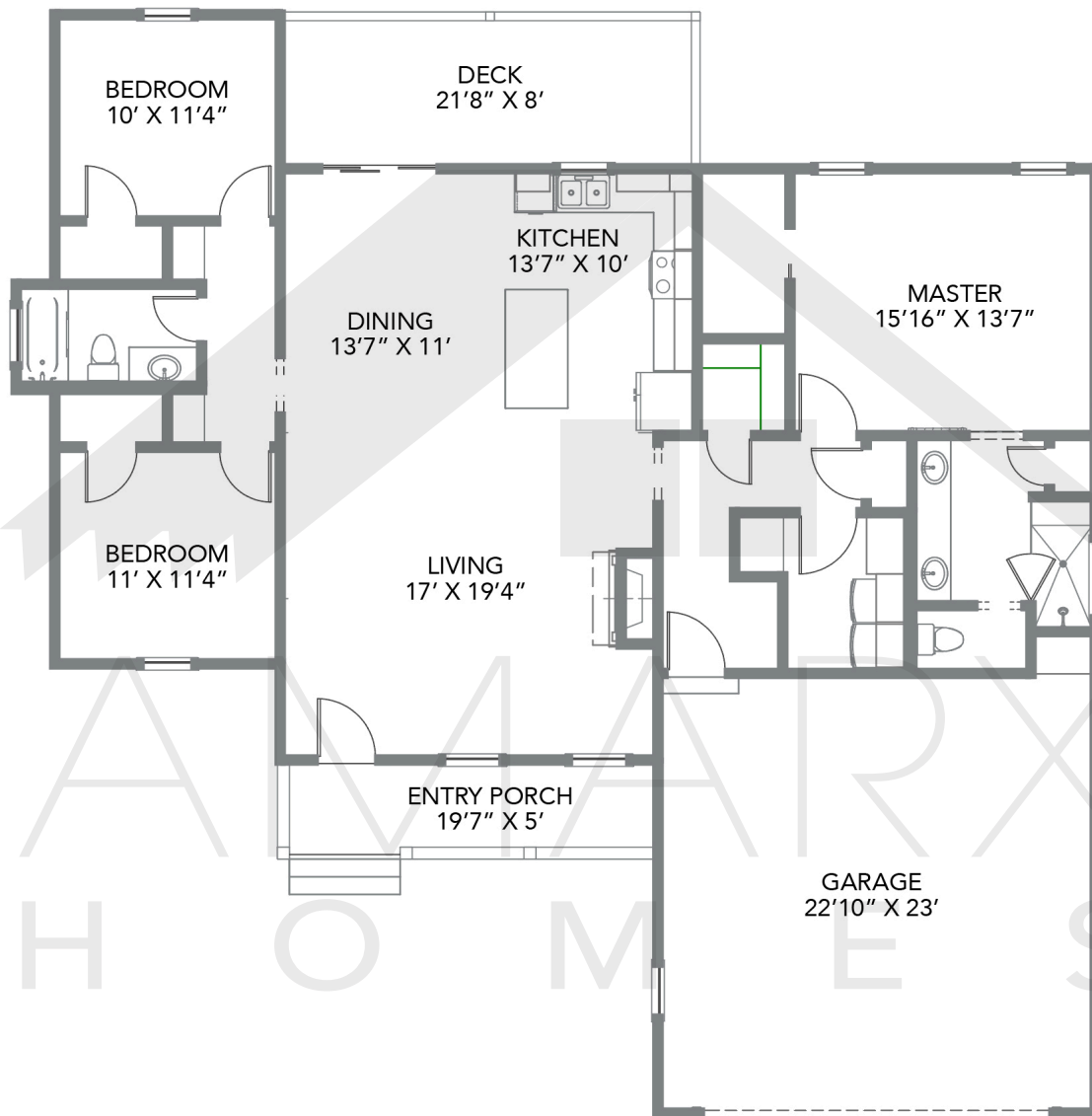
**DECK: 108 SQ. FT.**

**BEDROOMS : 3**

**BATHS : 2**

**828.424.7709**

**[www.amarx.net](http://www.amarx.net)**



## SPECIFICATIONS

- 1,617 heated square feet
- 3 bedrooms, 2 baths
- Large covered deck
- Gas fireplace

## EXTERIOR FEATURES

- Low maintenance cement siding
- Composite trim
- Architectural siding
- Jeld-Wen vinyl windows
- Low maintenance fiberglass exterior doors

## INTERIOR FEATURES

- Quality hardwood flooring in all the common areas
- 9' ceilings throughout
- Granite counter tops
- Large laundry and mud room