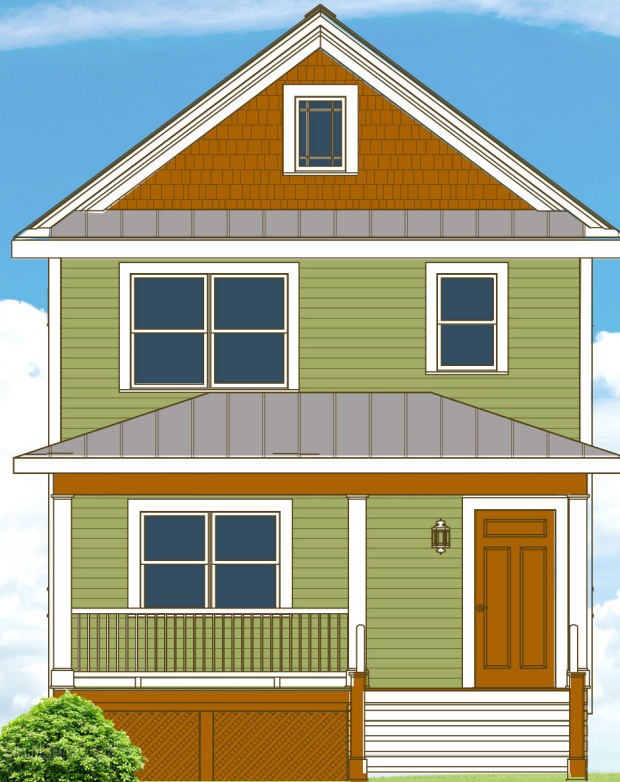




# THE BARTLETT



Amarx Construction is a full-service general contracting company based in Asheville, North Carolina and servicing all of Western North Carolina.

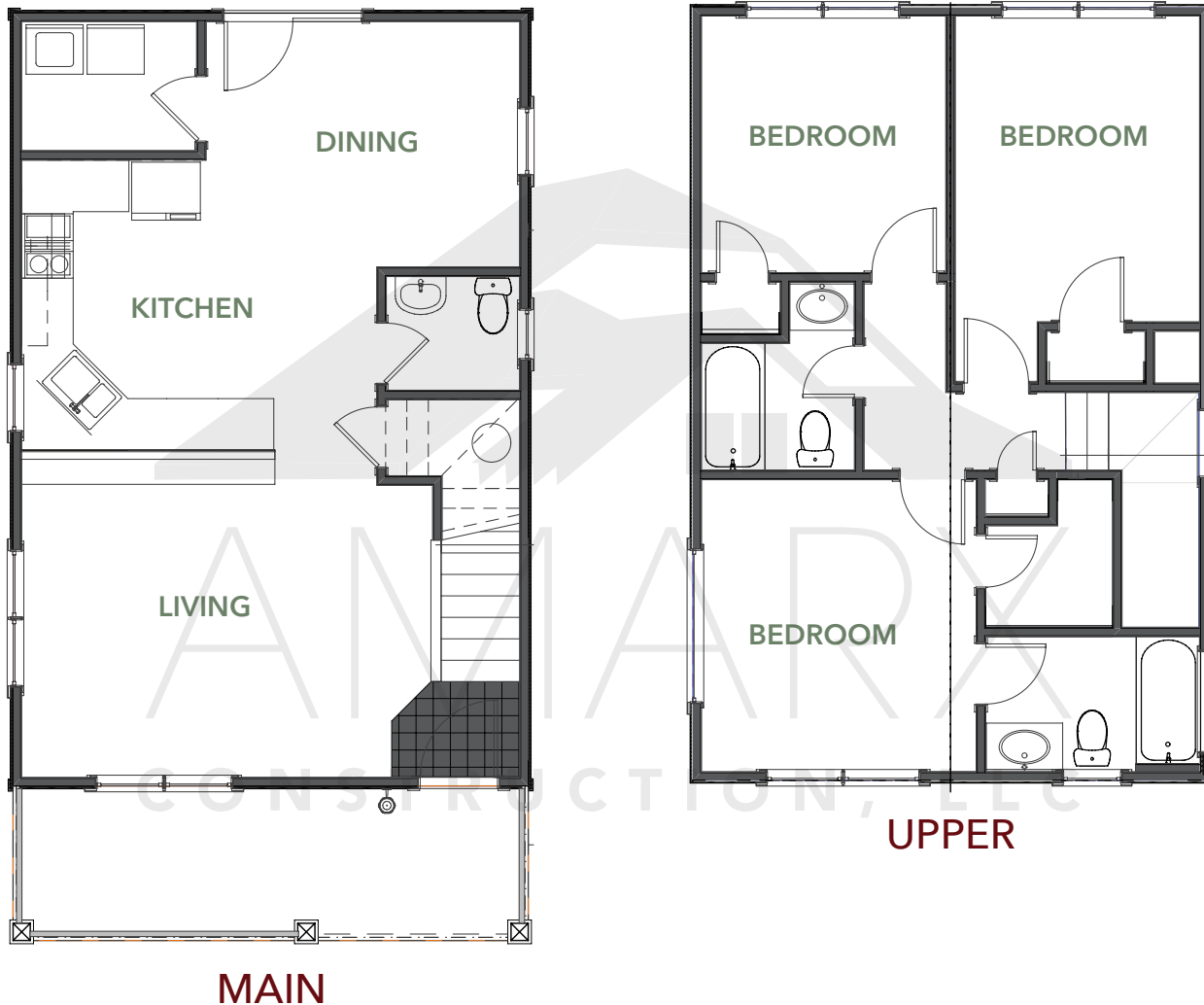
We know that your home is important to you and we will do our best to fulfill your dreams with exceptional quality and craftsmanship, all while keeping your budget in mind. Amarnx holds an Unlimited North Carolina General Contractors License, so we can take on any size job.

**MAIN FLOOR : 600 SQ. FT.**  
**UPPER FLOOR : 567 SQ. FT.**  
**TOTAL HEATED : 1,167 SQ. FT.**

**BEDROOMS : 3**  
**BATHS : 2.5**

**828.775.4001**  
**[www.amarx.net](http://www.amarx.net)**

The Bartlett Plan is the ultimate in efficiency. The small foot print of this 3 bed, 2.5 bath make it ideal for any lot size. The large living area leads to an open kitchen and dining area, complete with utility closet. Stairs at the entryway lead to three bedrooms. The master suite is full of natural light and includes an expansive walk-in closet. The two rooms in the back of the house share a three piece bath and both have ample closet space.



## SPECIFICATIONS

- 1,167 square foot home on 2 levels
- 3 bedrooms, 2.5 baths
- 6'x10' Rear Open Deck
- 6'x20' Covered Front Porch
- Open concept living
- Metal roof
- Small footprint

## EXTERIOR FEATURES

- Jeld-Wen Low Maintenance Windows
- Double hung windows makes cleaning easy
- Low maintenance exterior trim
- Low maintenance cement siding
- Covered Front Porch
- Stained cedar shakes
- Painted Fiberglass Door

## INTERIOR FEATURES

- 9' Ceilings on Main
- Delta plumbing fixtures
- Open floor plan
- Granite tops in kitchen and master
- Large Master Closet
- Vaulted Ceiling in Master bedroom
- High grade carpet in bedrooms
- Hardwoods throughout main level