

The Azalea

BY AMARX CONSTRUCTION



Southcliff, an award-winning gated community located on the south face of Cedar Mountain, has hand-picked a collection of premier builders to assist you in envisioning and realizing your dream mountain home. Each builder brings their own unique perspective along with years of experience, quality craftsmanship and attention to detail, while sharing the Southcliff philosophy of embracing authentic mountain living.



SOUTHCLIFF[®]
NATURE AT YOUR DOORSTEP

The Azalea

BY AMARX CONSTRUCTION

A home built with both family size and energy savings in mind, the Azalea features a spacious, 2496 square-foot floor plan that allows room to grow while maintaining efficiency. On the main level is the master bedroom, a large laundry room, an open floor plan and an expansive two-story foyer offering a light-filled welcome to homeowners and visitors alike.

Upstairs, are three bedrooms and two full baths, along with an optional bonus room that can be used for storage or, when completed, provide an additional 378-square feet of living space. An inviting covered porch is just off the living room, allowing comfortable seating space and another entryway to the home.

The Azalea can be built on either a crawlspace or include a basement. Detailed finishes and exterior are designed to please anyone's style and budget.

SPECIFICATIONS

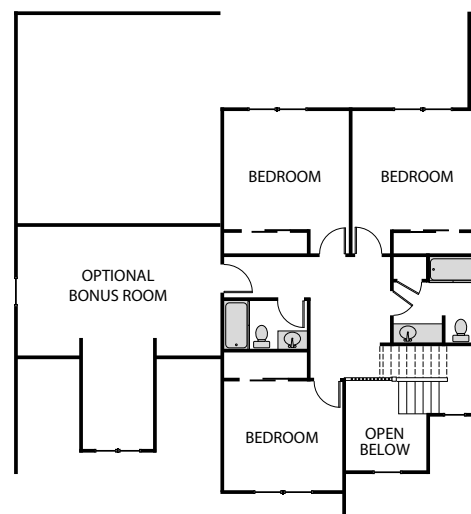
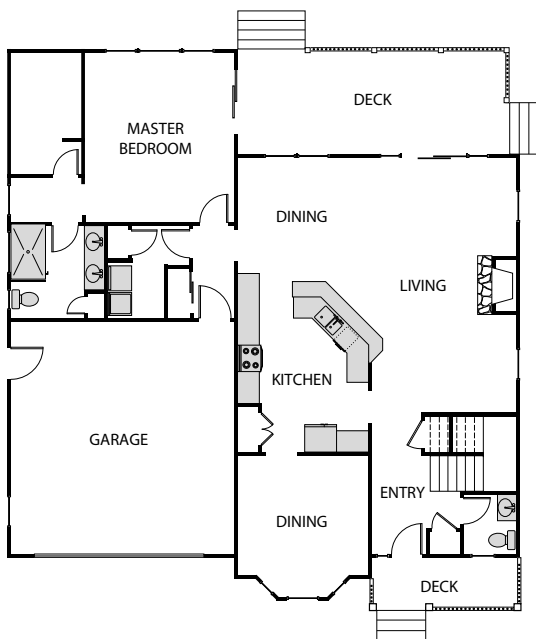
- Custom home built by Amarx Construction
- 2,496 heated square foot home on 2 levels in beautiful Southcliff
- 4 bedrooms, 3 1/2 baths
- Master on the main level
- Extra bonus room above garage can be used as storage or can be finished for additional space
- Attached 2 car garage
- Gas furnace on main floor
- Gas fireplace
- Large covered porch on rear

EXTERIOR FEATURES

- Jeld-Wen low maintenance windows
- Double hung windows makes cleaning easy
- Low maintenance cement siding
- Low maintenance exterior trim
- Covered porch on front and rear
- Stained cedar shakes
- Fiberglass doors for easy maintenance

INTERIOR FEATURES

- 9' ceilings on main level and 8' ceilings on second level
- Large 2 story foyer
- Delta plumbing fixtures
- Open floor plan
- Granite tops in kitchen and master
- Master on main level
- 3 bedrooms and 2 full baths upstairs
- Unfinished bonus room for storage or extra space
- Large laundry
- Hardwoods on main level and master bedroom
- Carpet in upstairs bedrooms



FIRST FLOOR PLAN HEATED/FINISHED:

Floor 1:	1,611 Sq. Ft.
Floor 2:	885 Sq. Ft.
Total:	2,496 Sq. Ft.



SOUTHCLIFF®
NATURE AT YOUR DOORSTEP